

DO NOT TRY TO INSTALL YOUR NEW FLUSH VENT WITHOUT READING THESE STEPS.
WE HIGHLY RECOMMEND YOUR CONTRACTOR INSTALL YOUR VENT WHILE THEY ARE
INSTALLING YOUR FLOORING.

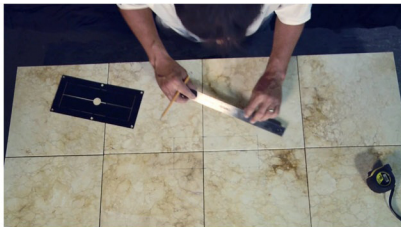
FOR A STANDARD VENT OPENING (DUCT OPENING) OF 4" X 10" - YOU HAVE RECEIVED A VENT
1" LARGER - FINISHING AT 5" X 11"

FOR A STANDARD VENT OPENING (DUCT OPENING) OF 3" X 10" - YOU HAVE RECEIVED A VENT
1" LARGER - FINISHING AT 4" X 11"

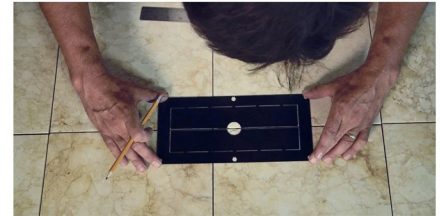
1. FIGURE OUT EXACTLY WHERE YOUR
VENT WILL FALL AND MARK YOUR TILES
ACCORDINGLY.



2. ONCE YOU HAVE MARKED YOUR
4X10 AREA, FIND THE CENTRE OF THE
HOLE



3. USE THE TEMPLATE PROVIDED, PLACE IT
OVER YOUR MARKED CENTRE AND TRACE
THE TEMPLATE.
GIVING YOU THE VENT DIMENSION OF 5X11.



4. YOU NOW HAVE YOUR NEW VENT
DIMENSIONS MARKED ON YOUR TILE.
1" LONGER THEN YOUR DUCT WORK, AND 1" WIDER.



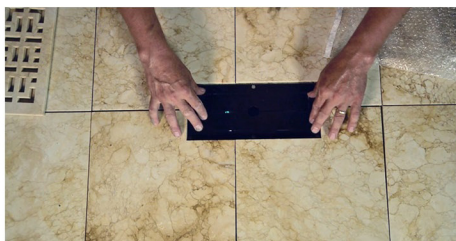
5. USE A SAW TO CUT YOUR
TILES AS REQUIRED.



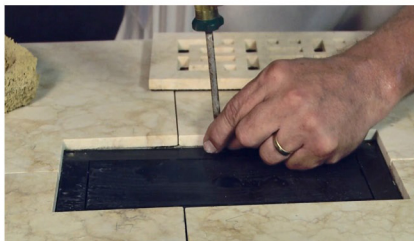
6. INSTALL THE TILES AS USUAL,
WITH CEMENT USING THE SAME
SIZE GROUT LINE.



7. PLACE THE TEMPLATE 'DIFFUSER INTO
YOUR OPENING.



8. SCREW THE DIFFUSER TO YOUR FLOOR BOARD,
AND ADJUST THE HEIGHT AS NECESSARY
CREATE A PERFECTLY FLUSH VENT.



9. PLACE YOUR NEW STONE VENT
INTO THE OPENING.



[HTTPS://YOUTU.BE/V-NRBRcx2BW](https://youtu.be/v-nrbrcx2bw)

YOUTUBE SEARCH: MADE2MATCH VENT INSTALLATION

